

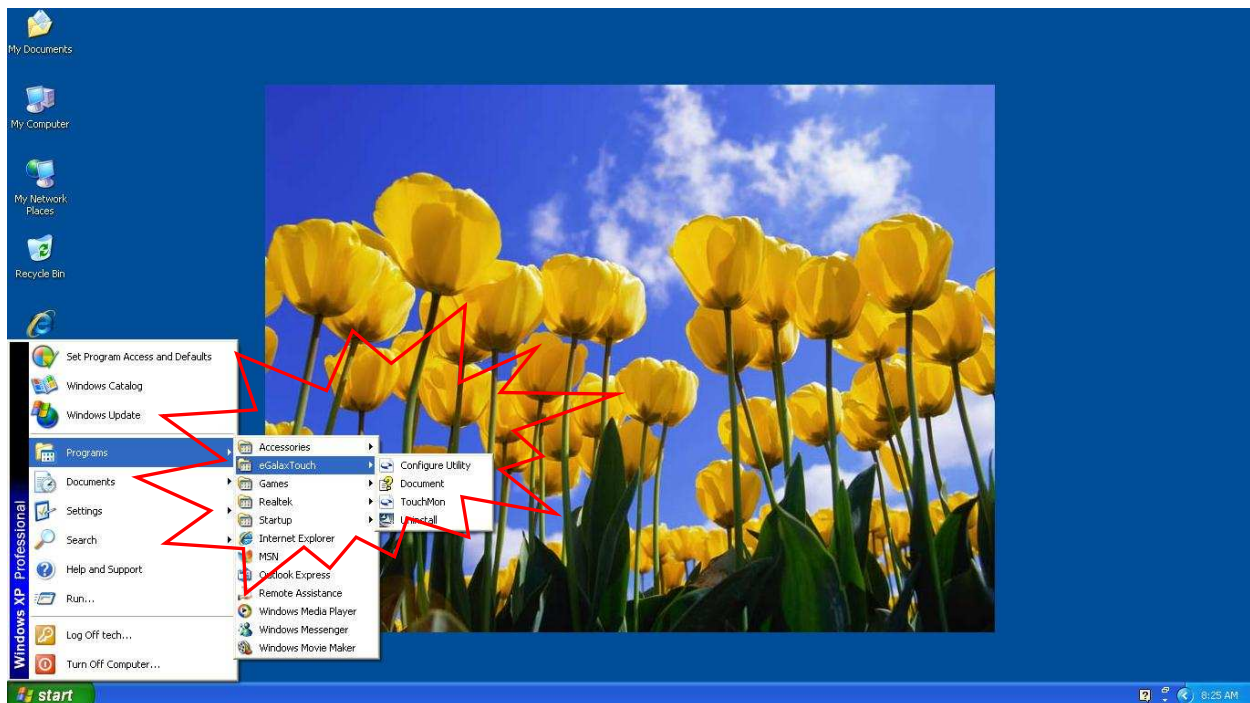
X50 Touch Screen Calibration Procedure

(USB Keyboard Needed For This)

You have just purchased a brand spankin' new X50 Touch Screen Computer. You've just finished installing Windows XP, yet, when you try to use the touch screen functionality, the mouse pointer position does not seem to match the physical location of your stylus.

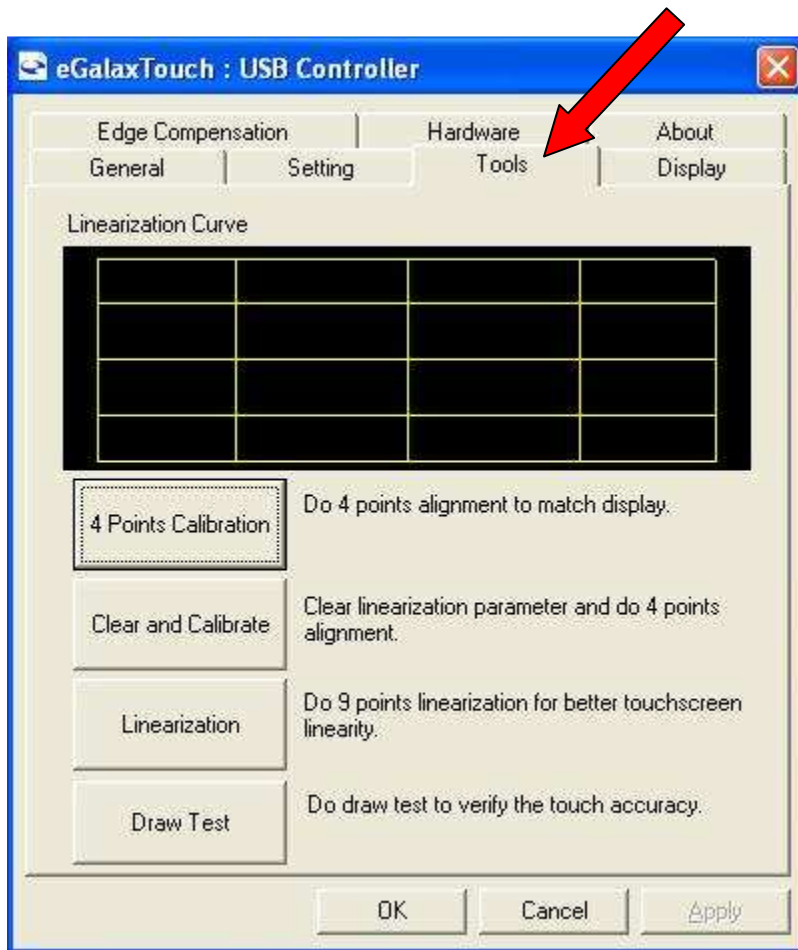
What could be occurring is that the touch screen has not been calibrated for whatever reason.

The first thing that must be done is to install the Touch Panel Driver which is located on the X50's support list page, at the Shuttle Global Site. Once that driver has been installed, there'll be a program entry in Start Menu, Programs, called eGalax Touch as shown here:



X50 Touch Screen Calibration Procedure

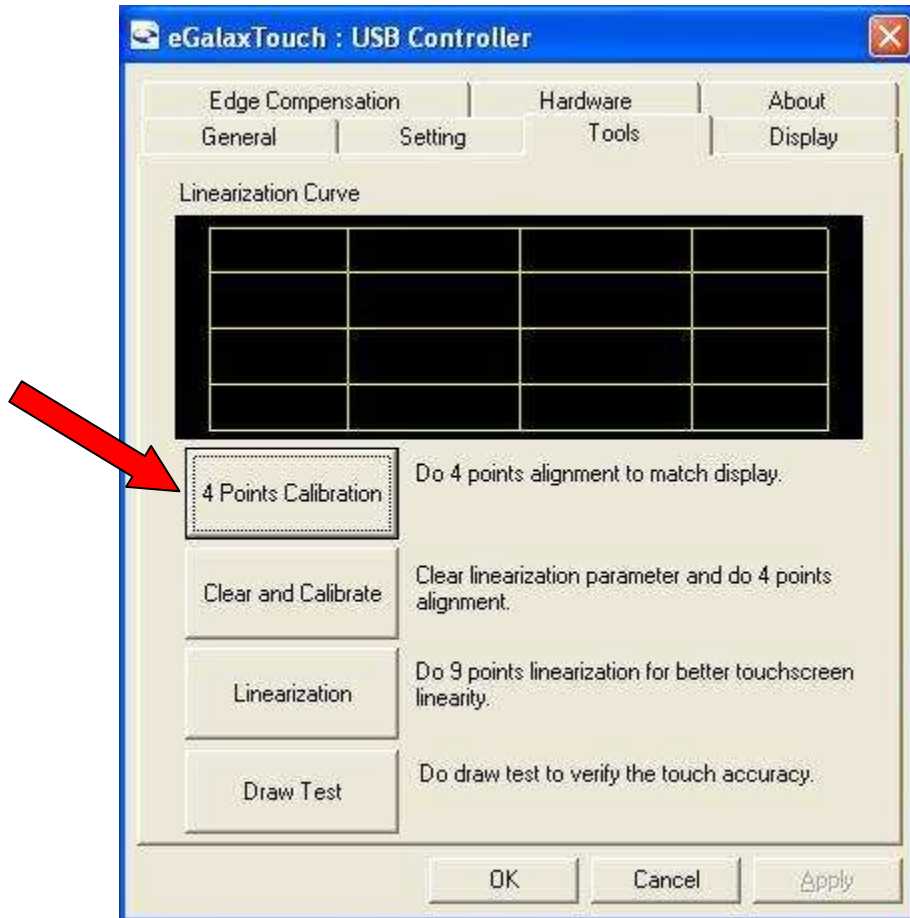
Within the eGalax Touch entry in Programs, there is a program called Configure Utility. When we click on that program, this will bring up the eGalaxy Touch: USB Controller Dialog Box as demonstrated here:



Within that dialog, you'll find a Tools Tab. If we click on that, we'll find a few calibration options available for us. For this FAQ, we are going to concentrate on the 4 Points Calibration Button.

X50 Touch Screen Calibration Procedure

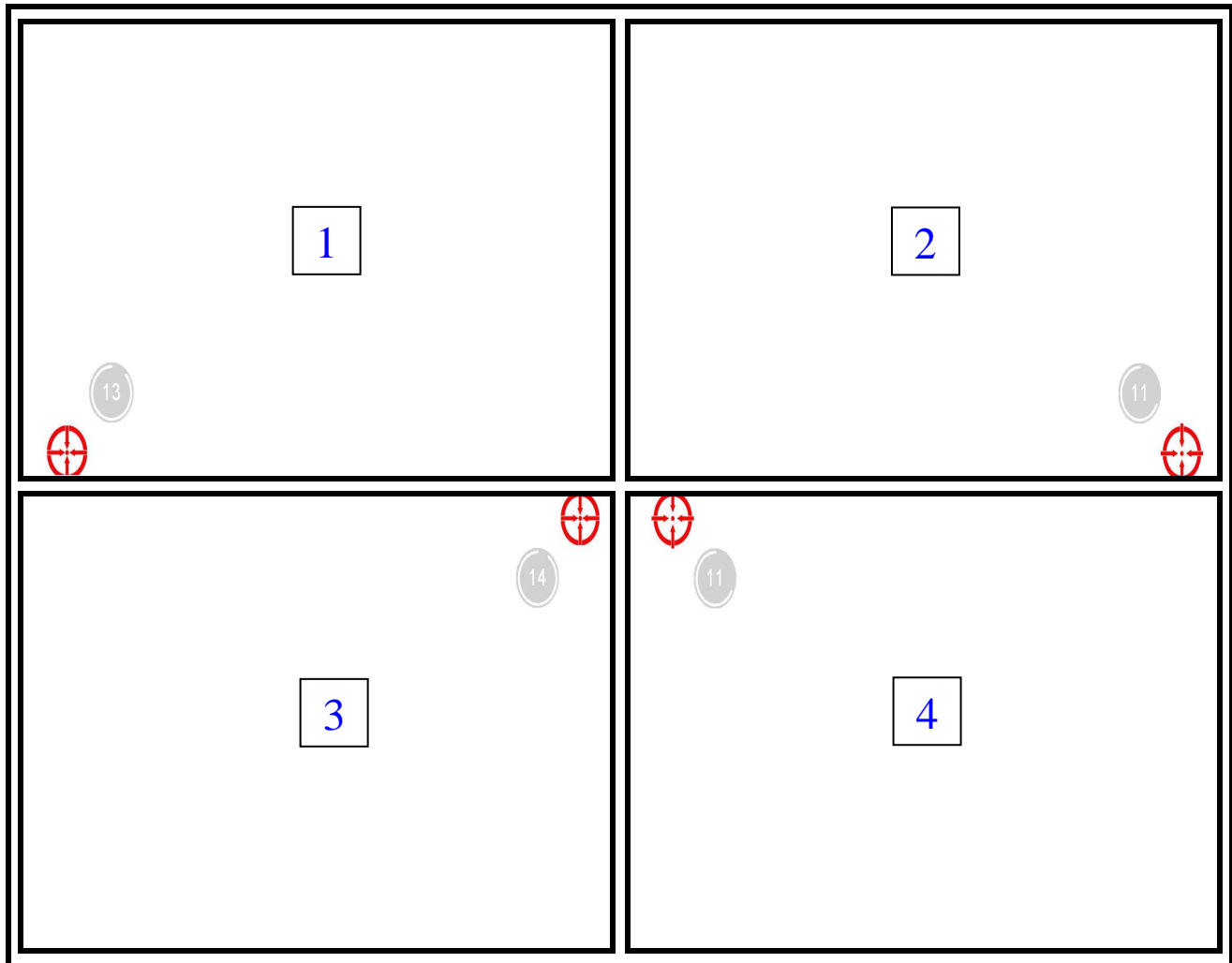
The 4 Points Calibration Button is shown in the following image:



To calibrate our X50, touch screen, we need to press the 4 Points Calibration button. Once that occurs, we shall be presented with the following screens which will then walk us step by step through the calibration procedure.

X50 Touch Screen Calibration Procedure

The calibration screens will appear as follows:

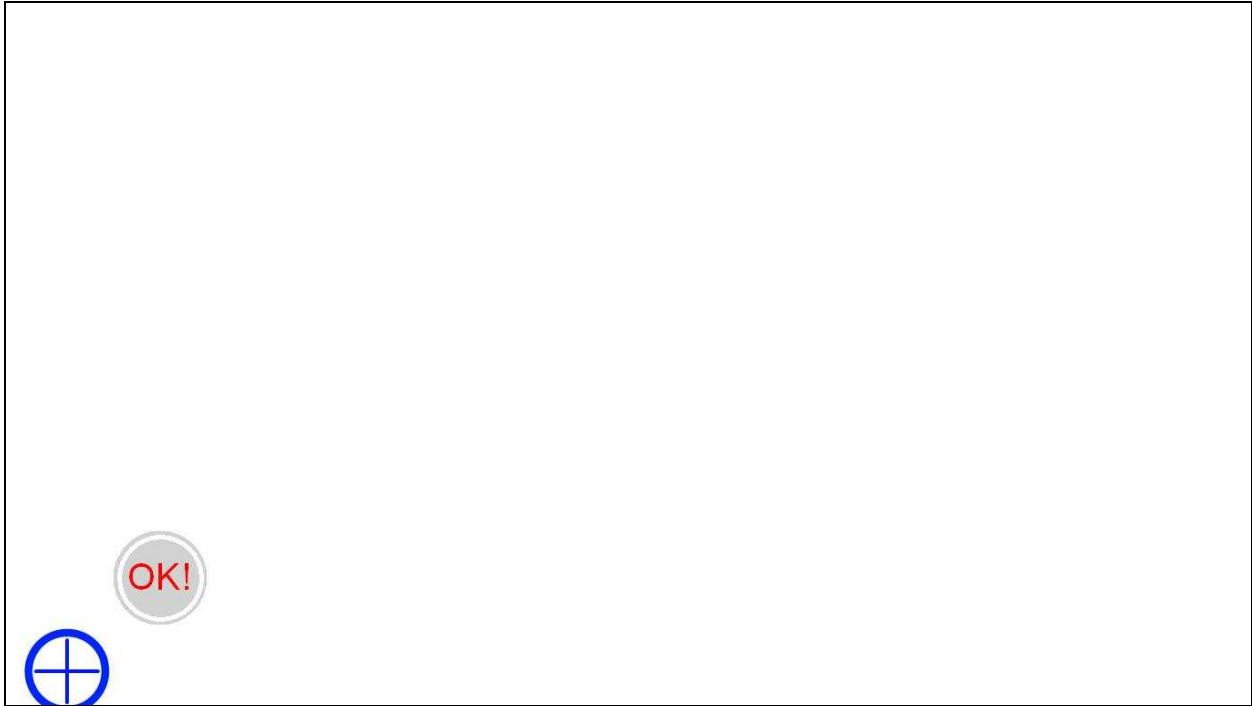


NOTE: Square Numbers were added for your convenience.

Basically, the calibration utility will prompt you to apply pressure on the areas highlighted in color for a few seconds as it calibrates that area of the touch screen. Once the calibration is finished on that area, a red circle with a crosshair will appear until you stop touching the screen. At that point, the calibration mark will move to another corner of the screen after which the process will begin again. This will happen for all corners of the screen until the calibration process has finished.

X50 Touch Screen Calibration Procedure

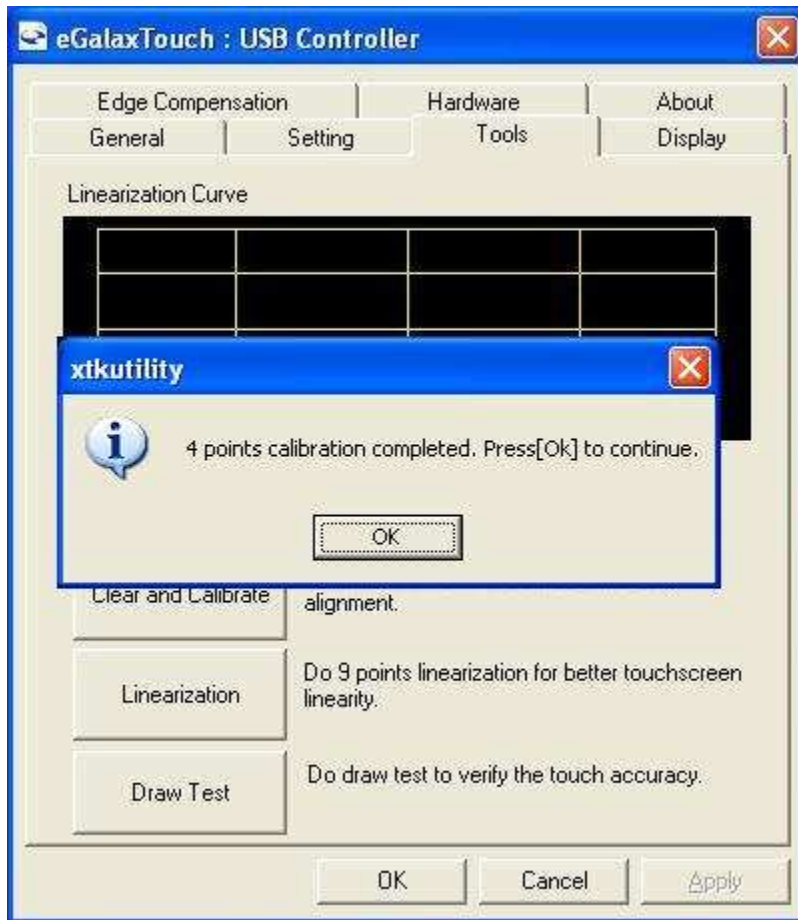
Once calibration has been completed for each individual points, on the LCD, an image similar to the following will be displayed:



This basically means that each point has been calibrated and the application is ready to move on to the next point that needs to be calibrated.

X50 Touch Screen Calibration Procedure

Once all points have been calibrated, you will receive the following dialog box indicating that the process is done:



At this point, the X50's touch screen has been calibrated for you and is ready for everyday use. 😊