

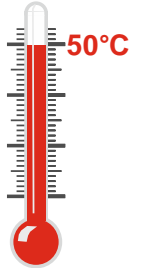
Good value, small and powerful

NC 1000XA is a Mini PC system without operating system based on the Shuttle XPC nano Barebone NC01U with less than 600 ml in volume. It is powered by an highly efficient Intel Celeron processor of the Broadwell ULV series. This small computer comes with a vast array of connectivity options such as HDMI, Mini-DisplayPort, USBs, LAN, WLAN-AC, COM port, Audio and an SD card reader. This makes it the ideal platform for applications such as digital signage, POS, Kiosk, Thin Client, Cloud Computing, Office PC and Multimedia.

**XPC nano System
NC 1000XA**



**5.5 W
Idle Mode**



**Dual
Video**



**intel
LAN**

Feature Highlights	
Slim Design	<ul style="list-style-type: none"> • Slim plastic chassis, black, 577 ml • Dimensions: 141 x 141 x 29 mm (LWH) • Incl. Stand & VESA mount (75/100 mm) • Hole for Kensington Lock • Operating temperature: max. 50°C
Operating System	<ul style="list-style-type: none"> • This system comes without operating system. It is compatible with Windows 7 / 8.1 / 10 and Linux, 32 and 64 bit
Processor	<ul style="list-style-type: none"> • Intel ULV processor: Celeron 3205U, 1.5 GHz • Integrated Intel HD Graphics, DX 11.2
Memory	<ul style="list-style-type: none"> • 4 GB DDR3L-1600 SO-DIMM
Hard Disk	<ul style="list-style-type: none"> • 500 GB Hard Disk Drive, 2.5"/6.35cm, SATA
M.2 Slot	<ul style="list-style-type: none"> • Empty slot for M.2-2242 SATA SSD drive
Connectors	<ul style="list-style-type: none"> • HDMI 1.4a, Mini-DisplayPort 1.2 • 2x USB 3.0 - 2A charging current • 2x USB 2.0, Gigabit LAN (RJ45) • Audio Combo (headphones, microphone) • SD card reader, RS232 COM port
WLAN+BT	<ul style="list-style-type: none"> • Wireless LAN 802.11ac + Bluetooth 4.0
Power Supply	<ul style="list-style-type: none"> • External 65 W fanless power adapter
Applications	<ul style="list-style-type: none"> • Home Media, Office, Digital Signage, etc

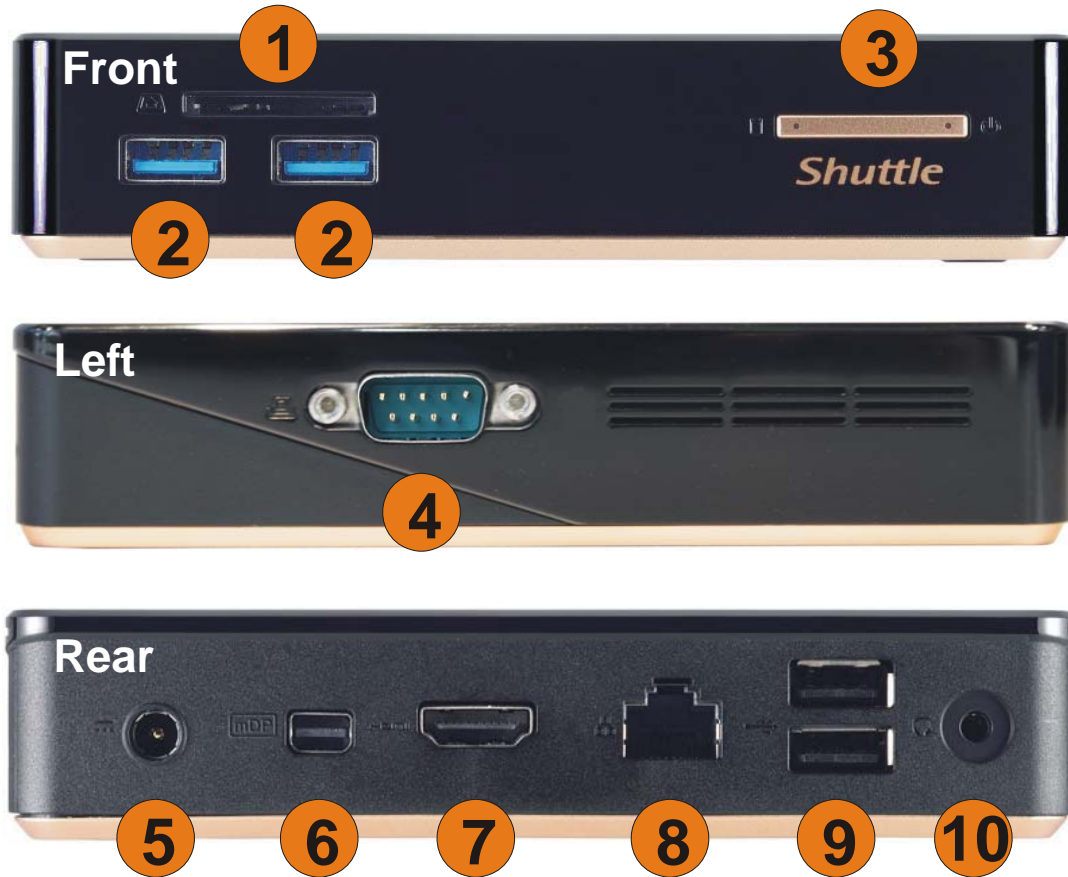


Images for illustration purposes only. This product does include the stand and VESA mount, but does not include the operating system.



© 2015 by Shuttle Computer Handels GmbH (Germany). All information subject to change without notice. Pictures for illustration purposes only.

Shuttle XPC nano system NC 1000XA – Product Views



- | | | | |
|---|-------------------------------------|----|---|
| 1 | Card reader | 6 | Mini-DisplayPort |
| 2 | 2x USB 3.0 (2A charging current) | 7 | HDMI |
| 3 | On/Off Button with 2 LEDs | 8 | Gigabit LAN (RJ45) |
| 4 | RS232 COM port | 9 | 2x USB 2.0 |
| 5 | DC input for external power adapter | 10 | Audio Combo Port 3.5 mm:
Headphones and Microphone |

© 2015 by Shuttle Computer Handels GmbH (Germany). All information subject to change without notice. Pictures for illustration purposes only.

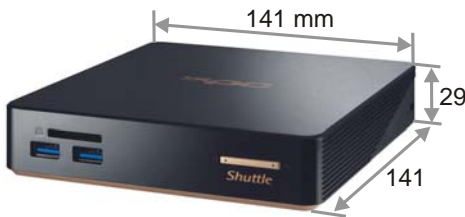
Operating Positions

1. Horizontal
2. Vertical with Stand
3. VESA-mounted behind a monitor

Stand and VESA mount with screws are included.

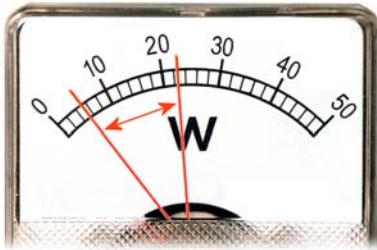


Product Features



Stylish and absolutely small

The black plastic case with its curves and coppery elements is certain to be the eyecatcher on your desk. Its volume of barely 600 ml makes it hardly noticeable as a PC, particularly when it is hidden behind monitors thanks to the supplied VESA mount. Despite its dinky dimensions, it provides generous connectivity options and even room for one 2.5 inch drive which can be an SSD or HDD.



Energy-saving

Power consumption mainly depends on system load. Equipped with a 2.5" SSD drive, the system consumes about 5.5 W in idle mode and a maximum of 22.4 W under full load. Running the device 5 days a week for eight hours a day in idle mode, the annual consumption would amount to less than 11.5 kWh which would mean just 2,9 Euros on the power bill (25 Euro ct/kWh) - way less than a conventional desktop PC draws.



Quick Charge via USB 3.0

Both USB 3 ports have a maximum power output of a 2A current, even if the PC is switched off. Do not connect other storage devices via a USB hub.



SD Card Reader

The built-in SD card reader at the front side makes file transfer from and to a digital camera easy. It takes SD, SDHC and SDXC memory flash cards in standard size format and also supports booting from bootable SD cards.



Serial Port

Many PCs do not have these legacy ports any longer, since they have been superseded and replaced by USB for most consumer applications, but they are still commonly used for applications such as industrial automation systems, scientific analysis, POS systems and other such fields. The Shuttle XPC nano Barebone NC01U features one serial RS-232 interface with the traditional 9-pin D-Sub connector for easy connectivity of appropriate components.



Dual Monitoring via HDMI and Mini-DisplayPort

The NC01U can connect two digital displays through its HDMI and Mini-DisplayPort. Dual monitoring helps improve on productivity by allowing for spreading multiple windows across two monitors while working with them simultaneously.

Shuttle XPC nano system NC 1000XA - Specifications

<p><i>Chassis</i></p>	<p>Barebone PC with a black plastic chassis Dimensions: 141 x 141 x 29 mm (LWH) = 577 ml Weight: 0.36 kg net, 1.26 kg gross Hole for Kensington Lock Includes vertical stand and 75/100mm VESA mount</p>
<p><i>Low Power Consumption</i></p>	<p>Power consumption in idle mode: 5.5 W, full load: 11.6 / 22.4 W (without/with graphics)</p>
<p><i>Operating System</i></p>	<p>This barebone system comes without operating system. It is compatible with:</p> <ul style="list-style-type: none"> - Windows 7 (including Embedded [4]), 32- and 64-bit - Windows 8.1 (including Embedded [4]), 32- and 64-bit - Windows 10, 32- and 64-bit - Linux, 32- and 64-bit (e.g. Ubuntu, OpenSUSE, Fedora)
<p><i>Processor</i></p>	<p>Model: Intel Celeron 3205U (ULV) System-on-a-chip architecture (SoC): no chipset required Code name: Broadwell (5th Generation Intel Core) Cores / Threads: 2 / 2 Clock rate: 1.5 GHz L1/L2/L3 Cache: 128 kB / 512 kB / 2048 kB Memory controller: DDR3L-1600 Dual Channel (1.35V) TDP wattage: 15 W maximum Manufacturing process: 14 nm Maximum Tjunction Temperature: 105°C Integrated Intel HD graphics engine Supports 64 Bit, VT-x, VT-d, Enhanced SpeedStep, NX bit, SSE 4.1/4.2</p>
<p><i>Integrated Graphics</i></p>	<p>Intel HD Graphics Clock rate: 300~800 MHz Maximum resolution: 2560 x 1600 Execution Units (EU): 12 Two digital audio/video ports: Mini-DisplayPort 1.2 [1] and HDMI 1.4a Supports two independent screens Supports DirectX 11.2, OpenCL 1.3/2.0, OpenGL 4.3 Supports full AVC/VC1/MPEG2 hardware decoding Supports HD video plus multi-channel digital audio via a single cable Dynamic, shared memory: up to 1632 MB</p>
<p><i>Mainboard BIOS</i></p>	<p>Supports resume after power failure Supports Wake on LAN (WOL) Supports Power on by RTC Alarm Supports booting from USB devices and SD card reader AMI BIOS in 8 MByte EEPROM with SPI interface Supports hardware monitoring and watch dog function (ITE 8528E) Supports Unified Extensible Firmware Interface (UEFI)</p>

© 2015 by Shuttle Computer Handels GmbH (Germany). All information subject to change without notice. Pictures for illustration purposes only.

Power Adapter	External 65 W power adapter (fanless) Input: 100~240 V AC, 50/60 Hz, max. 1.6 A Output: 19 V DC, max. 3.42 A, max. 65 W DC Connector: 5.5/2.5mm (outer/inner diameter)
Memory	4 GB DDR3L-1600 SO-DIMM memory
M.2 Slot	M.2 slot: (NGFF) type 2242, key M Supports M.2 SSD card, key B+M, dimensions 22 x 42 mm, Serial ATA interface Caution: SSDs with PCIe interface (M key only) are not supported
2.5" Hard Disk Drive	500 GB Serial ATA hard disk in 6.35cm/2.5" format Device height: 7 mm (max.), Serial-ATA III interface
Audio	Audio Realtek® ALC 269Q-VC3 High-Definition Audio Codec 3.5mm / 4-pole combo audio connector for headphones and microphone [2] Digital multi-channel audio output: via HDMI and Mini-DisplayPort
Gigabit LAN	Intel i218LM PHY connected to the MAC of the processor Supports 10 / 100 / 1.000 MBit/s operation (Gigabit) Supports WAKE ON LAN (WOL) Supports network boot by Preboot eXecution Environment (PXE)
Wireless Network (WLAN)	WLAN expansion card (M.2- 2230-AE) with two internal antennas Chip: Realtek RTL8821AE Supports Wireless LAN IEEE 802.11b/g/n/ac 1T1R, 2,4 GHz or 5 GHz Max. speed: 150 Mbps (2.4 GHz) or 433 Mbps (5 GHz) Supports Bluetooth 4.0
Card Reader	Integrated SD card reader Supports SD, SDHC and SDXC memory flash cards Genesys Logic GL823-OGY08 with USB interface Supports booting from SD card
Front Panel Connectors	2x USB 3.0 (both support 2.0 A charging) SD card reader (supports SD, SDHC, SDXC) Power button Power LED (blue, blinking in suspend mode) HDD LED (orange)
Back Panel Connectors	Mini-DisplayPort 1.2 [1] HDMI 1.4a 2x USB 2.0 Gigabit LAN (RJ45) Audio Combo Port for headphones and microphone (3.5 mm jack, 4-pole) [2] DC-input connector for external power adapter
Left Side Connectors	Serial RS232 COM port (D-Sub, 9-pin)

<p><i>Supplied Accessories</i></p>	<p>User guide Driver DVD for Windows VESA mount set (made of steel, with screws) Stand for vertical operation mode Power adapter with AC power cord</p>
<p><i>Environmental Specifications</i></p>	<p>Operating temperature range: 0~50°C [3] Relative humidity range: 10~90% (non-condensing)</p>
<p><i>Conformity Certifications</i></p>	<p>EMI: FCC, CE, BSMI, C-Tick Safety: ETL, CB, BSMI Other: RoHS, Energy Star, ErP This device is classed as a technical information equipment (ITE) in class B and is intended for use in living room and office. The CE-mark approves the conformity by the EU directives: (1) 2004/108/EC relating to electromagnetic compatibility (EMC), (2) 2006/95/EC relating to Electrical Equipment designed for use within certain voltage limits (LVD), (3) 2009/125/EC relating to ecodesign requirements for energy-related products (ErP), (4) 1999/5/EC related to Radio and Telecommunications Terminal Equipment (R&TTE)</p>

[1] Mini-DisplayPort

A monitor with a standard DisplayPort can ideally be connected using an adapter cable that converts Mini-DisplayPort to DisplayPort (e.g. DELOCK 82698).

[2] Audio connector

The 3.5mm audio jack at the back panel of this device supports both a 4-pole connector for headphones and microphone and headphones with only a 3-pole connector. Headsets with separate connectors for headphones and microphone, though, require an appropriate adapter, if also the microphone should be used.

[3] High ambient temperatures

Caution: for high ambient temperature over 40°C we strongly recommend to use SSDs (supporting at least 70°C) and rugged SODIMM memory with wide temperature range (up to 95°C).