

Attractive entry-level PC for every day use

The Shuttle K-Series K 4800H Complete System is a simple home or second PC with configurable standard components. The DVI-output enables the integrated graphics to offer sharp images even on larger displays. A specific highlight is that you can apply your own logo to the front panel. Anyone looking for a reliable and budget-priced Mini-PC for simple applications will strike gold with the K 4800H.

Shuttle K-Series K 4800H



Feature Highlight	
Category	<ul style="list-style-type: none"> Home
Shuttle Barebone	<ul style="list-style-type: none"> This is a fully configured system based on the Shuttle K-Series Barebone K48 Chassis color: black
OS	<ul style="list-style-type: none"> Windows Vista Basic
Processor	<ul style="list-style-type: none"> Intel Processor, Socket 775, max. 1066MHz FSB-frequency: Celeron, Celeron Dual Core, Pentium Dual Core or Core 2 Duo
Memory	<ul style="list-style-type: none"> Up to. 2 GB DDR2-667, Dual Channel
Graphics	<ul style="list-style-type: none"> Integrated Intel GMA 950 graphics
Audio	<ul style="list-style-type: none"> Integrated 6-ch Audio
LAN	<ul style="list-style-type: none"> Gigabit Ethernet LAN (1000 Mbit/s)
Drives	<ul style="list-style-type: none"> Serial-ATA hard disk DVD writer (Dual Format, Dual Layer)
Warranty	<ul style="list-style-type: none"> 24 months Pick-up and Return Service
Further configuration options	<ul style="list-style-type: none"> It is possible to modify certain components of this system. Please refer to the "Shuttle Systems Configurator" on Shuttle's website sys.eu.shuttle.com

Picture for illustration purposes only.

©2008 by Shuttle Computer Handels GmbH (Germany). All information subject to change without notice. Pictures for illustration purposes only.

Shuttle K-Series K 4800H Specifications (configurable)

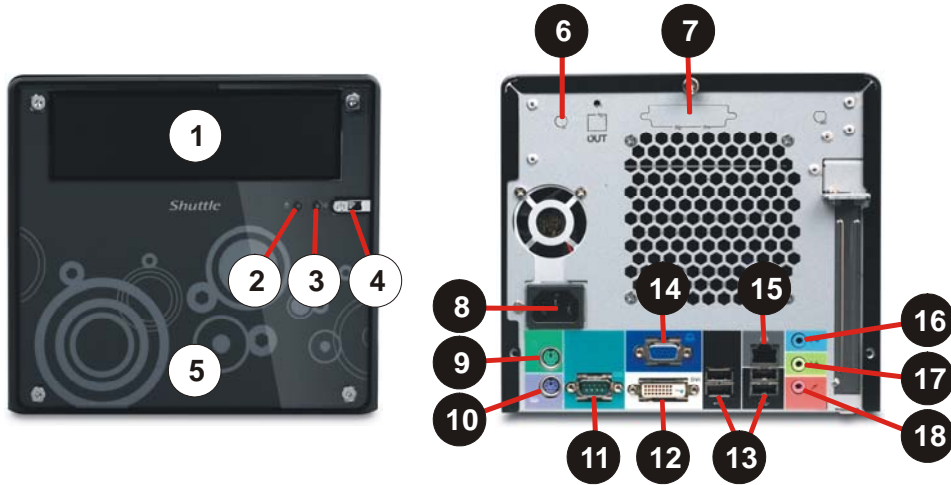
<i>Range of application</i>	Home
<i>Basis</i>	System based on: the Shuttle K-Series Barebone K48
<i>Operating system</i>	Operating system: Microsoft Windows Vista (various versions available) 9 languages available: German, English, French, Dutch, Italian, Spanish, Swedish, Finnish, Danish
<i>Chassis</i>	Chassis: Black K-type chassis with aluminum cover and acrylic front plate Temperature controlled 92x92x25mm rear chassis fan Storage bays: 2x 3.5" internal, 1x 5.25" external Dimensions: 29.5 x 20 x 18.5 cm (LWH) = 10.9 litres
<i>Processor</i>	Intel processors with Socket 775 with up to 1066MHz FSB frequency: Celeron, Celeron Dual-Core, Pentium Dual-Core, Core2 Duo with 65nm or 45nm technology
<i>Chipset</i>	Intel® 945GC Express Chipset (MCH, Northbridge) + ICH7 (Southbridge)
<i>Hard disk</i>	Equipped with one 3.5" Serial ATA 300 hard disk
<i>Optical drive</i>	16x DVD Writer, supports Dual Format and Dual Layer
<i>Memory</i>	With up to 2 GB DDR2-667 memory Supports Dual Channel Technology
<i>Integrated Graphics</i>	Intel Graphics Media Accelerator 950 (GMA950) with PCI-E x1 improved bandwidth, features 333MHz graphics core DX8/DX9 support and enhanced 3D performance Dynamic Video Memory Technology (DVMT) 3.0 Shared Memory max. 224MB Video connectors: Digital DVI and analog Sub-D Supports Dual Monitor operation (DVI and VGA) in clone mode.
<i>Audio</i>	Audio Realtek® ALC 662 6-channel High-Definition Audio Three analog audio connectors (3.5mm) at the Back-Panel: 1) Front Line out (head phone) 2) Rear Surround line-out (shared with microphone input) 3) Center line-out (shared with Line in)

<i>LAN</i>	<p>Gigabit Ethernet network controller (Marvell 8056) Supports 10/100/1000 MBit/s operation RJ45 back panel connector Supports Wake-on-LAN function and PXE (Preboot Execution Environment)</p>
<i>Front-panel</i>	<p>Power button Power indicator (LED) HDD indicator (LED)</p>
<i>Back-panel I/O connectors</i>	<p>DVI Video (digital) D-sub Video (analog) 4x USB 2.0 RJ45 LAN connector PS/2 keyboard connector PS/2 mouse connector Serial COM port Audio Front Line out (head phone) Audio Rear Surround line-out (shared with microphone input) Audio Center line-out (shared with Line in) optional Wireless LAN module (PN20)</p>
<i>Empty slots</i>	<p>no expansion slots</p>
<i>Power supply</i>	<p>100 Watt Flex ATX power supply unit Input voltage range: 100~240V AC, 47~63 Hz Active PFC (Power Factor Correction) EMI Certified: FCC, CE, BSMI Safety Certified: UL, TÜV, CB Power plug region specific 40 mm cooling fan sensor control</p>
<i>Further configuration options</i>	<p>It is possible to modify certain components of this system. Please refer to the "Shuttle Systems Configurator". URL: sys.eu.shuttle.com</p>
<i>Warranty</i>	<p>24 Months Pick-Up-And-Return Service</p>

©2008 by Shuttle Computer Handels GmbH (Germany). All information subject to change without notice. Pictures for illustration purposes only.

Connectors

Front and Back view



- 1 5.25" bay for optical drive
- 2 Hard disk LED
- 3 Power LED
- 4 Power button
- 5 MyKover – changeable front design

- 6 Optional WLAN
- 7 Optional parallel port
- 8 AC power socket
- 9 PS/2 mouse port
- 10 PS/2 keyboard port
- 11 Serial port
- 12 DVI video out

- 13 4x USB 2.0 ports
- 14 VGA video out
- 15 Gigabit LAN (RJ45)
- 16 Audio line-in
- 17 Audio line-out
- 18 Microphone input

MyKover – Customize Your Front Panel



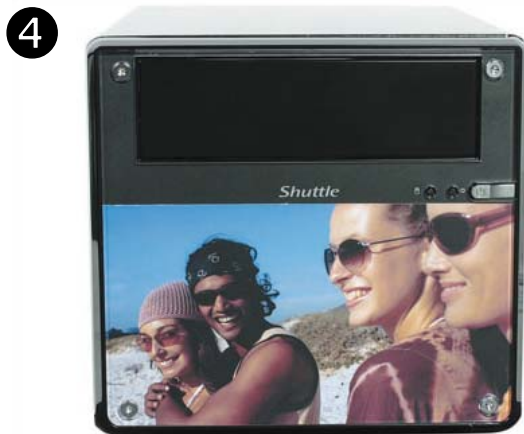
1 Unfasten the front panel by removing the four screws. Remove both the transparent glass and the image.



2 Insert the new image and cover back the transparent glass on top.



3 Align and correspond the transparent glass and new image to screw holes on the front of the machine. Carefully screw back the four screws.



4 Congratuation, you have your customized image now.

©2008 by Shuttle Computer Handels GmbH (Germany). All information subject to change without notice. Pictures for illustration purposes only.