

Smart budget solution for simple tasks

The Shuttle K-Series K 480V PC system is a great choice for basic computing needs such as office applications and web surfing in the business or home segment. It is a small and stylish PC platform with low power consumption that seamlessly integrates into a network using its Ethernet or an optional WLAN interface. This affordable entry-level platform with preinstalled OpenSUSE Linux operating system targets SME, corporate, public and educational institutions. Easily set up an ideal second home PC to manage any simple everyday applications in a snap while banking on Shuttle's high reliability.



Feature Highlight

K chassis	<ul style="list-style-type: none"> Black chassis with aluminum cover Dimensions: 28 x 19 x 17 cm (L/W/H)
OS	<ul style="list-style-type: none"> OpenSUSE Linux
Chipset	<ul style="list-style-type: none"> Intel 945GC + ICH7 Integrated GMA950 graphics Video output: VGA + DVI
CPU	<ul style="list-style-type: none"> Socket 775, max. 65W TDP Intel Celeron, Pentium Dual-Core, Core 2 Duo
Memory	<ul style="list-style-type: none"> 1GB or 2GB DDR2-800 (2x 512MB)
Drives	<ul style="list-style-type: none"> 80~1000 GB SATA II hard disk Optional DVD writer
Other	<ul style="list-style-type: none"> 5.1 HD audio 4x USB 2.0 Gigabit LAN Serial Port (RS-232) PS/2 ports for mouse and keyboard Optional WLAN (PN20)
Power supply	<ul style="list-style-type: none"> 100 Watt Flex-ATX power supply
Application	<ul style="list-style-type: none"> Business
Service	<ul style="list-style-type: none"> 24 months Bring-In-Service

Product ID: K 480V
Order No: PCM-K4800V01

Images for illustration purposes only.
The optical drive is an optional feature only

Shuttle K-Series **K 480V** Specifications

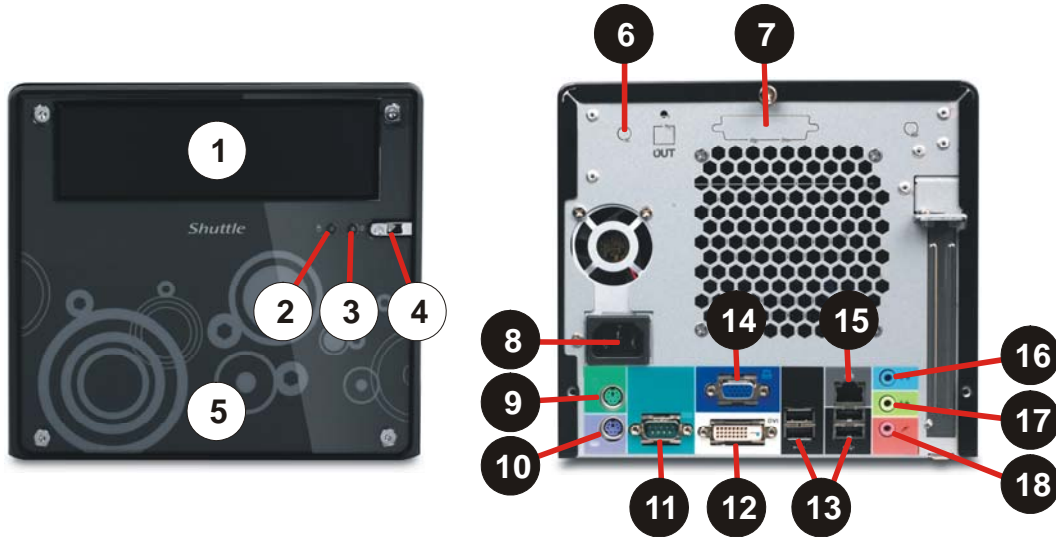
<i>Range of application</i>	Recommended for business use
<i>Basis</i>	System based on: the Shuttle K-Series Barebone K48
<i>Operating system</i>	OpenSUSE Linux, powered by Novell
<i>Chassis</i>	Black K-type chassis with aluminum cover and acrylic front plate Temperature controlled 92x92x25mm rear chassis fan Storage bays: 2x 3.5" internal, 1x 5.25" external Dimensions: 29.5 x 20 x 18.5 cm (LWH) = 10.9 litres
<i>Processor</i>	Socket 775 mit Intel Celeron 4xx, Pentium Dual-Core E2xxx, Core 2 Duo E4xxx/E6xxx Unterstützt bis zu 1333 MHz Frontside Bus, 65/45nm Herstellungstechnologie und maximal 65W TDP (Verlustleistung)
<i>Cooling technology</i>	Big 92mm chassis fan at the rear side and Intel-boxed processor cooler Temperature-controlled RPM fan speed (Smart fan technology)
<i>Chipset</i>	Intel® 945GC Express Chipset (MCH, Northbridge) + ICH7 (Southbridge)
<i>Hard disk</i>	160GB 3.5" Serial ATA 300 hard disk
<i>Optical drive</i>	Optional DVD Writer, supports Dual Format and Dual Layer
<i>Memory</i>	One or two memory modules DDR2-667/800 (240 pins) Can be configured with 512MB or up to 2 GB total capacity.
<i>Integrated Graphics</i>	Intel Graphics Media Accelerator 950 (GMA950) with PCI-E x1 improved bandwidth, features 333MHz graphics core DX8/DX9 support and enhanced 3D performance Dynamic Video Memory Technology (DVMT) 3.0 Shared Memory max. 224MB Video connectors: Digital DVI and analog Sub-D Supports Dual Monitor operation (DVI and VGA) in clone mode.
<i>Audio</i>	5.1-channel audio Audio Realtek® ALC 662 6-channel High-Definition Audio Three analog audio connectors (3.5mm) at the Back-Panel: 1) Front Line out (head phone) 2) Rear Surround line-out (shared with microphone input) 3) Center line-out (shared with Line in)

<p><i>LAN controller</i></p>	<p>Gigabit Ethernet network controller (Marvell 8056) Supports 10/100/1000 MBit/s operation RJ45 back panel connector Supports Wake-on-LAN function and PXE (Preboot Execution Environment)</p>
<p><i>Front panel buttons & LEDs</i></p>	<p>Power button Power indicator (LED) HDD indicator (LED)</p>
<p><i>Back panel connectors</i></p>	<p>DVI Video (digital) D-sub Video (analog) 4x USB 2.0 RJ45 LAN connector PS/2 keyboard connector PS/2 mouse connector Serial COM port Audio Front Line out (head phone) Audio Rear Surround line-out (shared with microphone input) Audio Center line-out (shared with Line in)</p>
<p><i>Slots</i></p>	<p>no expansion slots</p>
<p><i>Power supply</i></p>	<p>100 Watt Flex ATX power supply unit Input voltage range: 100~240V AC, 47~63 Hz Active PFC (Power Factor Correction) EMI Certified: FCC, CE, BSMI Safety Certified: UL, TÜV, CB Power plug region specific 40 mm cooling fan sensor control</p>
<p><i>Warranty</i></p>	<p>24 Months Bring-In-Service</p>

© 2006 by Shuttle Computer Handels GmbH (Germany). All information subject to change without notice. Pictures for illustration purposes only.

Connectors

Front and Back view



- | | | |
|-------------------------------------|--------------------------|-----------------------|
| 1 5.25" bay for optical drive | 6 Optional WLAN | 13 4x USB 2.0 ports |
| 2 Hard disk LED | 7 Optional parallel port | 14 VGA video out |
| 3 Power LED | 8 AC power socket | 15 Gigabit LAN (RJ45) |
| 4 Power button | 9 PS/2 mouse port | 16 Audio line-in |
| 5 MyKover – changeable front design | 10 PS/2 keyboard port | 17 Audio line-out |
| | 11 Serial port | 18 Microphone input |
| | 12 DVI video out | |