

### Smart budget solution for simple tasks

The Shuttle K-Series K 480VA PC system is a great choice for basic computing needs such as office applications and web surfing in the business or home segment. It is a small and stylish PC platform with low power consumption that seamlessly integrates into a network using its Ethernet or an optional WLAN interface. This affordable entry-level platform with preinstalled OpenSUSE Linux operating system targets SME, corporate, public and educational institutions. Easily set up an ideal second home PC to manage any simple everyday applications in a snap while banking on Shuttle's high reliability.



### Feature Highlight

|                     |  |
|---------------------|--|
| <b>K chassis</b>    | <ul style="list-style-type: none"> <li>Black chassis with aluminum cover</li> <li>Dimensions: 28 x 19 x 17 cm (L/W/H)</li> </ul>   |
| <b>OS</b>           | <ul style="list-style-type: none"> <li>OpenSUSE Linux</li> </ul>   |
| <b>Chipset</b>      | <ul style="list-style-type: none"> <li>Intel 945GC + ICH7</li> <li>Integrated GMA950 graphics</li> <li>Video output: VGA + DVI</li> </ul>  |
| <b>CPU</b>          | <ul style="list-style-type: none"> <li>Socket 775</li> <li>Intel Pentium E5200 (2x 2.5GHz)</li> </ul>  |
| <b>Memory</b>       | <ul style="list-style-type: none"> <li>1GB DDR2-800 (2x 512MB)</li> </ul>  |
| <b>Drive</b>        | <ul style="list-style-type: none"> <li>160GB SATA II hard disk</li> </ul>  |
| <b>Other</b>        | <ul style="list-style-type: none"> <li>5.1 HD audio</li> <li>4x USB 2.0</li> <li>Gigabit LAN</li> <li>Serial Port (RS-232)</li> <li>PS/2 ports for mouse and keyboard</li> </ul> |
| <b>Power supply</b> | <ul style="list-style-type: none"> <li>100 Watt Flex-ATX power supply</li> </ul>   |
| <b>Application</b>  | <ul style="list-style-type: none"> <li>Business</li> </ul>   |
| <b>Service</b>      | <ul style="list-style-type: none"> <li>24 months Bring-In-Service</li> </ul>   |

Product ID: K 480VA  
Order No: PCV-K4800VA1



The configuration of the Shuttle K-Series K 480VA is only one of several configurations available of the Shuttle K-Series K 480V. Please refer to the **Shuttle Systems Configurator** ([sys.eu.shuttle.com](http://sys.eu.shuttle.com)) to see the full range of other possible built-to-order (BTO) systems.

Images for illustration purposes only.

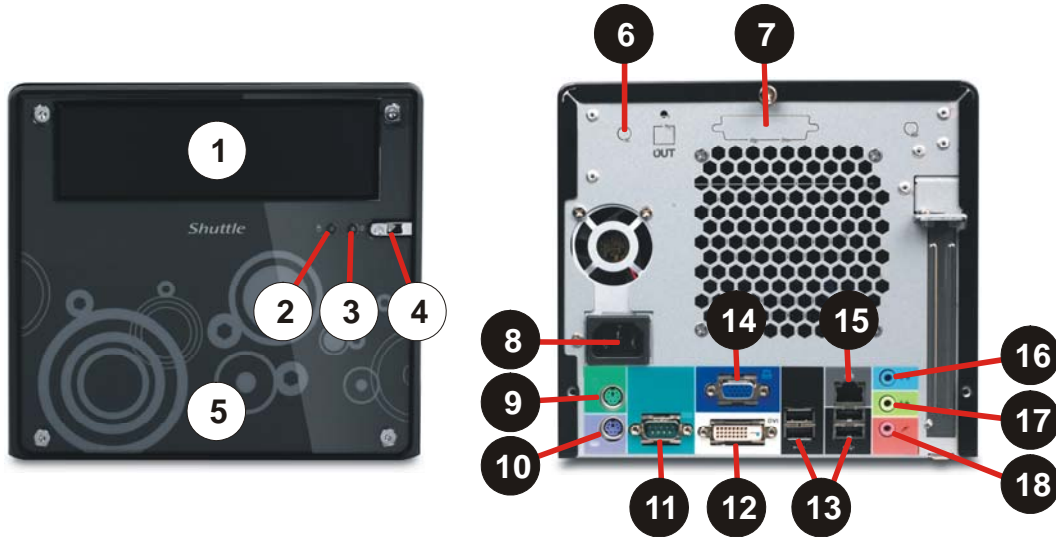
## Shuttle K-Series **K 480VA** Specifications

|                             |  |
|-----------------------------|--|
| <i>Range of application</i> | Recommended for business use   |
| <i>Basis</i>                | System based on: the Shuttle K-Series Barebone K48   |
| <i>Operating system</i>     | OpenSUSE Linux, powered by Novell  |
| <i>Chassis</i>              | Black K-type chassis with aluminum cover and acrylic front plate<br>Temperature controlled 92x92x25mm rear chassis fan<br>Storage bays: 2x 3.5" internal, 1x 5.25" external<br>Dimensions: 29.5 x 20 x 18.5 cm (LWH) = 10.9 litres   |
| <i>Processor</i>            | Intel® Pentium E5200<br>Core frequency: 2x 2.5GHz<br>Processor socket 775<br>L1-Cache: 2x32kB, L2-Cache: 2x 1024kB<br>Instruction sets: MMX, SSE3, Execution-Disable (XD-Bit) Thermal-Monitor 2, Enhanced Halt State (C1E), Speedstep (EIST), 64 Bit (EM64T)<br>FSB frequency: 800 MHz (quad-pumped)<br>Processor core: 45nm Wolfdale-2M<br>Max. power consumption: 65 watts (TDP) |
| <i>Cooling technology</i>   | Big 92mm chassis fan at the rear side and Intel-boxed processor cooler<br>Temperature-controlled RPM fan speed (Smart fan technology)  |
| <i>Chipset</i>              | Intel® 945GC Express Chipset (MCH, Northbridge) + ICH7 (Southbridge)   |
| <i>Hard disk</i>            | 160GB 3.5" Serial ATA 300 hard disk  |
| <i>Memory</i>               | 1 GB DDR2-800 memory (2x 512MB)  |
| <i>Integrated Graphics</i>  | Intel Graphics Media Accelerator 950 (GMA950)<br>with PCI-E x1 improved bandwidth, features 333MHz graphics core<br>DX8/DX9 support and enhanced 3D performance<br>Dynamic Video Memory Technology (DVMT) 3.0<br>Shared Memory max. 224MB<br>Video connectors: Digital DVI and analog Sub-D<br>Supports Dual Monitor operation (DVI and VGA) in clone mode.                        |

|                                       |   |
|---------------------------------------|---|
| <i>Audio</i>                          | <p>5.1-channel audio<br/>         Audio Realtek® ALC 662 6-channel High-Definition Audio<br/>         Three analog audio connectors (3.5mm) at the Back-Panel:<br/>         1) Front Line out (head phone)<br/>         2) Rear Surround line-out (shared with microphone input)<br/>         3) Center line-out (shared with Line in)</p>  |
| <i>LAN controller</i>                 | <p>Gigabit Ethernet network controller (Marvell 8056)<br/>         Supports 10/100/1000 MBit/s operation<br/>         RJ45 back panel connector<br/>         Supports Wake-on-LAN function and<br/>         PXE (Preboot Execution Environment)</p>   |
| <i>Front panel buttons &amp; LEDs</i> | <p>Power button<br/>         Power indicator (LED)<br/>         HDD indicator (LED)</p>   |
| <i>Back panel connectors</i>          | <p>DVI Video (digital)<br/>         D-sub Video (analog)<br/>         4x USB 2.0<br/>         RJ45 LAN connector<br/>         PS/2 keyboard connector<br/>         PS/2 mouse connector<br/>         Serial COM port<br/>         Audio Front Line out (head phone)<br/>         Audio Rear Surround line-out (shared with microphone input)<br/>         Audio Center line-out (shared with Line in)</p> |
| <i>Slots</i>                          | no expansion slots  |
| <i>Power supply</i>                   | <p>100 Watt Flex ATX power supply unit<br/>         Input voltage range: 100~240V AC, 47~63 Hz<br/>         Active PFC (Power Factor Correction)<br/>         EMI Certified: FCC, CE, BSMI<br/>         Safety Certified: UL, TÜV, CB<br/>         Power plug region specific<br/>         40 mm cooling fan sensor control</p>   |
| <i>Warranty</i>                       | 24 Months Bring-In-Service  |

## Connectors

### Front and Back view



- 1 5.25" bay for optical drive
- 2 Hard disk LED
- 3 Power LED
- 4 Power button
- 5 MyKover – changeable front design

- 6 Optional WLAN
- 7 Optional parallel port
- 8 AC power socket
- 9 PS/2 mouse port
- 10 PS/2 keyboard port
- 11 Serial port
- 12 DVI video out

- 13 4x USB 2.0 ports
- 14 VGA video out
- 15 Gigabit LAN (RJ45)
- 16 Audio line-in
- 17 Audio line-out
- 18 Microphone input