

PS10 Expansion Kit for PS/2 Connectors

Designed for the Shuttle XPC

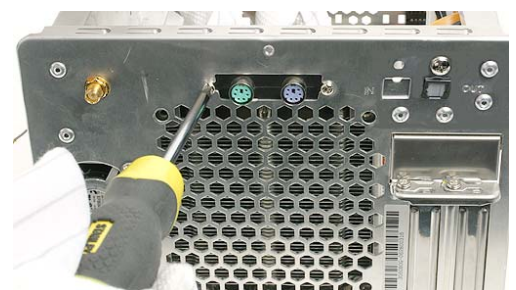
The Shuttle XPC Accessory PS10 is an expansion kit to add PS/2 connectors for keyboard and mouse. It can be easily installed within a few minutes on compatible Shuttle XPCs. While the traditional PS/2 ports have been replaced by two additional USB 2.0 connectors at the back panel of some of the latest Shuttle XPCs, users can still use PS/2 devices with this accessory item.

XPC Accessory PS10



Feature Highlights

Type	<ul style="list-style-type: none"> • PS/2 port expansion kit
External connectors	<ul style="list-style-type: none"> • (1) PS/2 keyboard connector • (2) PS/2 mouse connector
Internal connector	<ul style="list-style-type: none"> • 1x6 pin PS/2 onboard header
Cable length	<ul style="list-style-type: none"> • Cable length: ca. 34 cm
External attachment	<ul style="list-style-type: none"> • Port perforation at the back panel of the Shuttle XPC. 2 screws enclosed.
XPC compatibility	<p>For use with Shuttle XPCs which have an appropriate PS/2 onboard header and a port perforation at the back panel. PS10 is compatible with the following Shuttle XPC Barebones:</p> <ul style="list-style-type: none"> • SG33G5/M • SG33G6 Deluxe • SN68SG2 • SN68PTG5 • SN68PTG6 Deluxe. <p>For further supported models, please visit Shuttle's website at www.shuttle.com.</p>



Article number: **PS10**

Order number: **PCZ-PS10**

UPC-Barcode:

