

Accessory for the XS35 series to support a second hard disk drive

Using this accessory, a second 2.5" drive (hard disk or SSD) can be fitted in a Shuttle Slim-PC of the XS35 series. This will occupy the bay for the optical slimline drive (e.g. DVD R/W drive).

**Shuttle Accessory
PHD2N**



**Accessory PHD2N with hard disk.
The hard disk is not included.**

Feature Highlight

<p><i>Scope of delivery</i></p>	<ul style="list-style-type: none"> • Hard disk rack • Hard disk adapter card • 2x screws for the adapter card • 4x screws for the hard disk • 2x standoff screws
<p><i>Compatibility</i></p>	<ul style="list-style-type: none"> • Compatible with Shuttle Slim-PCs of the XS35 series: XS35, XS35GT, XS35V2, XS35GTV2, XS35GTAV2, XS35GSV2, XS35V3, XS35V3L, XS35GTAV3, XS35GSV3, XS35GSV3L, XS35V4. • Supports one SATA drive (hard disk or SSD) with 63.5mm/2.5" form factor and a maximum height of 9.5mm.



Shuttle XS35 series with the PHD2N accessory

Product PHD2N
Order No: POE-PHD2N



Images for illustration purposes only.



Shuttle XS35 series completely

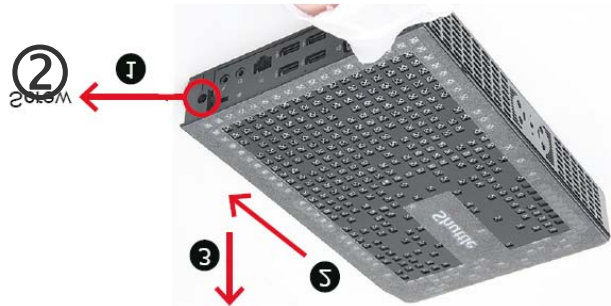
Accessory PHD2N – Installation Guide

①



Before removing the system casing, in the interests of safety please first turn off your computer and unplug it from the power supply.

②



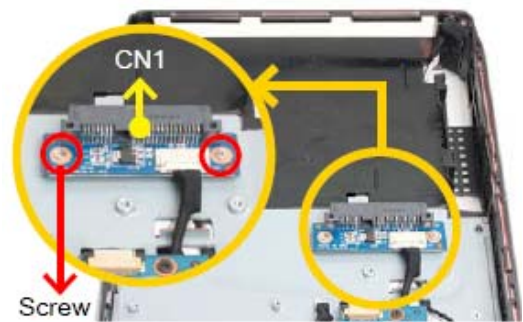
Remove the two covers which are on both sides of your XS35.

③



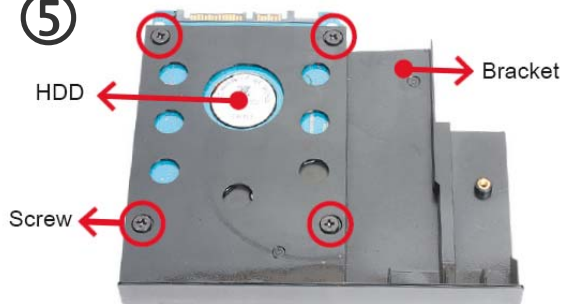
Tighten the two nuts first just as shown.
Two Nuts

④



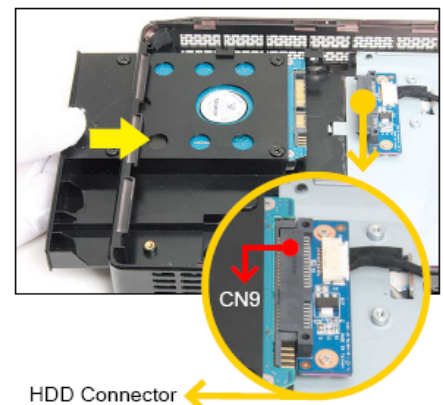
As shown, install the HDD Adapter Card with two screws and connect the cable to CN1.

⑤



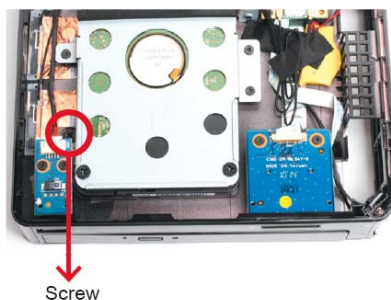
Mount HDD into the bracket with screws.

⑥



As shown, install the HDD & bracket in the chassis and push it towards the direction as indicated by the yellow arrow to connect the HDD connector (CN9).

⑦



Turn your XS35 upside down and tighten the hard disk and bracket with one screw.

⑧



Replace system casing and fasten the cover screw in place.