

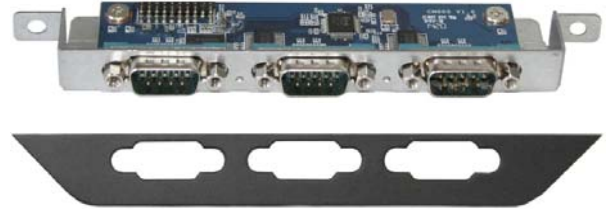
**Shuttle Accessory PCM3:
Triple COM port expansion for Shuttle
Slim-PC Barebone XH81**

The Shuttle Accessory PCM3 provides three additional COM ports to the front panel of the Shuttle Slim-PC Barebone XH81. However, using PCM3 means that no optical drive nor TPM module can be used.

Feature Highlights

<p><i>Scope of delivery</i></p>	<ul style="list-style-type: none"> • Triple COM port adapter board (1x) • Appropriate front panel cover (1x) • Screws (2x) • Quick Installation Guide
<p><i>Compatibility</i></p>	<ul style="list-style-type: none"> • Compatible with the Shuttle Slim-PC Barebone XH81. • Not compatible with XH81V, XH97V, XH110, XH110V, XH170V.
<p><i>Notes</i></p>	<ul style="list-style-type: none"> • Because the upper bay of the Shuttle Slim-PC Barebone XH81 is occupied by the Shuttle Accessory PCM3, an optical drive can no longer be used. • The default configuration of the Shuttle Slim-PC Barebone XH81 features a TPM slot connected to the LPC interface of the mainboard, which is also used by PCM3. This means a TPM module can no longer be used, if PCM3 is installed.

**Shuttle Accessory
PCM3**



Shuttle Slim-PC Barebone XH81 with built-in Accessory PCM3



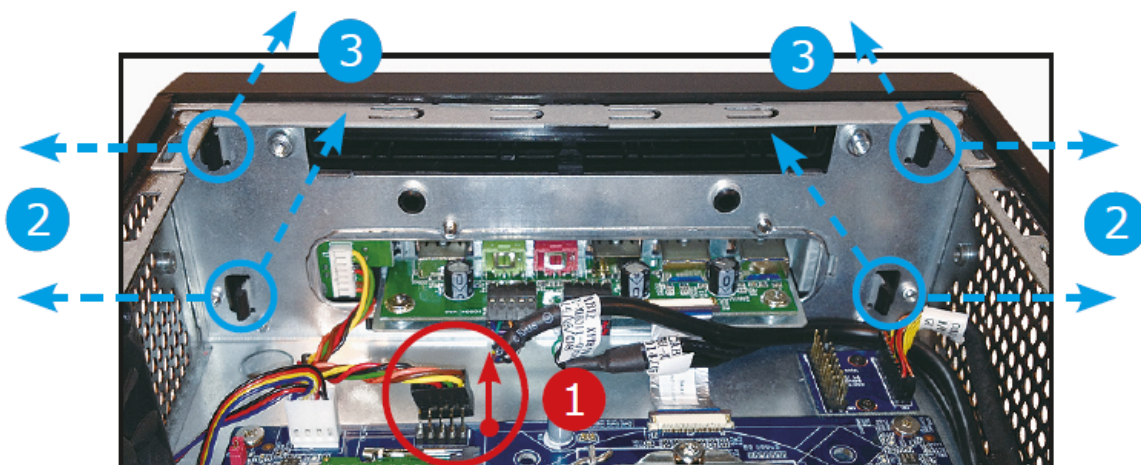
UPC code: 811686005834
Images for illustration only.

Shuttle Accessory PCM3 – Installation Guide

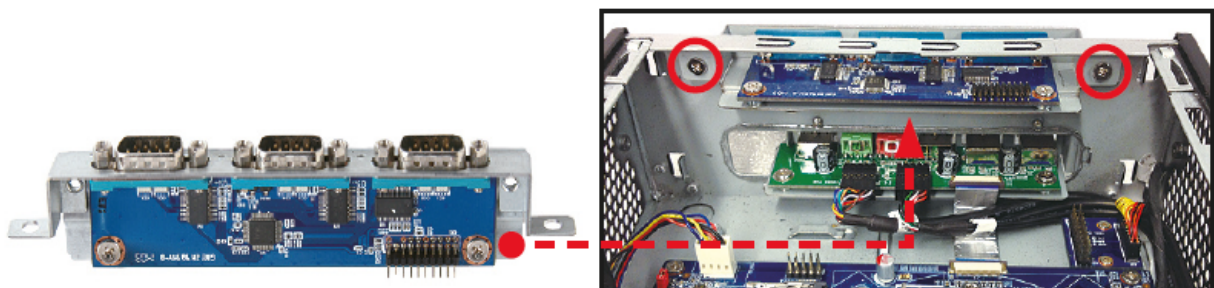
Caution: Due to safety reasons, please turn off your computer completely first and unplug it from the power adapter.

Please install with reference to the following steps:

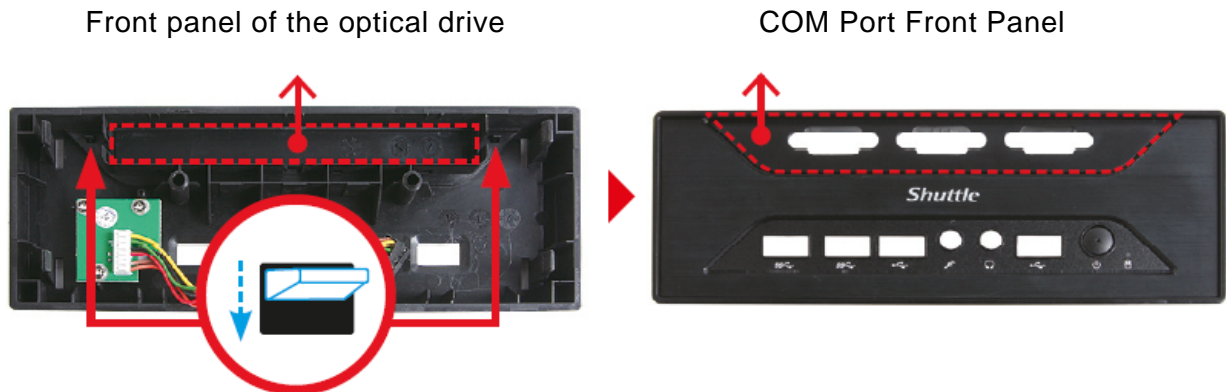
1. Unscrew the two thumbscrews of the chassis cover. Slide the cover backward and upward.
2. Unplug the SATA and power cables from the HDD/ODD and remove the racks and CPU thermal module.
Note: Please refer to your Quick Installation Guide when disassembling the HDD/ODD or CPU cooling.
3. Unplug the power connector from the motherboard. Push the four clips outward, then push forward gently to unlock the front panel for removal.



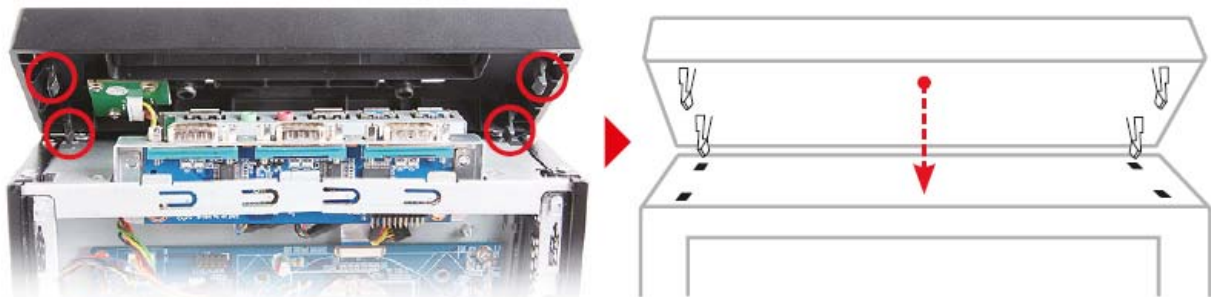
4. Tighten the "COM Board Adapter" with two screws as shown.



- To remove the ODD front panel, push the two clips downward, then push forward to unlock. Now install the COM Port front panel.



- Install the COM Port front panel and check that it is properly aligned.



- Connect the power cable to "JP3". Disconnect the cable from the internal TPM-Adapter and connect it to the COM Port Adapter. This means a TPM module can no longer be used.
- Install the CPU thermal module and HDD along with the bracket in the enclosure. Connect the CPU thermal module/HDD power and SATA cables.
- To complete installation, replace the cover and fasten its two screws on the rear.

