

**COM/LPT port expansion for Shuttle XPC aio X50V4/V5/V6**

The Shuttle accessory PCL71 is compatible with the Shuttle XPC All-in-One- X50V4, X50V5 and X50V6. It will add two serial (COM) and one parallel (LPT) port to the back panel of the PC.

**Shuttle XPC Accessory PCL71**



**Feature Highlight**

<i>Product</i>	<ul style="list-style-type: none"> <li>Name: Shuttle Accessory PCL71</li> <li>UPC code: 887993800011</li> </ul>
<i>External ports</i>	<ul style="list-style-type: none"> <li>2x Serial port RS232 "COM 1" is switchable to RS422/RS485 (Sub-D, 9 pins, male)</li> <li>1x Parallel port (Sub-D, 25 pins, female)</li> </ul>
<i>External power</i>	<ul style="list-style-type: none"> <li>Both serial ports can provide an auxiliary voltage supply of either 5V or 12V</li> </ul>
<i>Scope of delivery</i>	<ul style="list-style-type: none"> <li>Printed Circuit Board (PCB)</li> <li>4 screws</li> <li>Ribbon cable</li> <li>Type label sticker (Rating label)</li> <li>Multi-language quick installation guide (EN, DE, FR)</li> </ul>
<i>Compatibility</i>	<ul style="list-style-type: none"> <li>Compatible with the Shuttle XPC All-in-One- X50V4, X50V5 and X50V6</li> </ul>

Images for illustration purposes only.

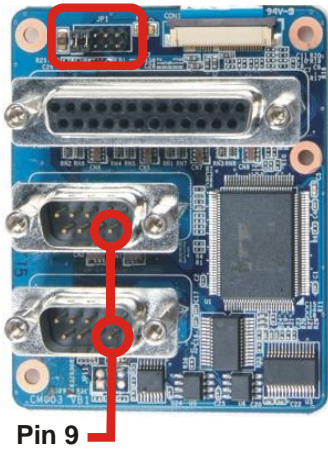


X50V4/V5/V6 without PCL71



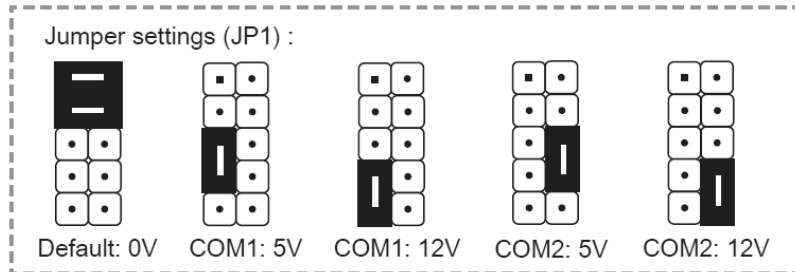
X50V4/V5/V6 with PCL71 installed

**Jumper setting**  
**Jumper JP1**



**Power over serial port**

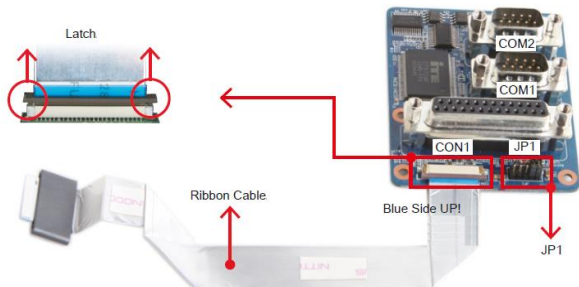
Both serial ports can provide a voltage supply of either 0V, 5V or 12V over Pin 9 (Ring pin) of the D-Sub connector depending of the jumper setting. This voltage can be used to supply external devices. With jumper JP1 you can configure the voltage.



**Quick Installation Guide:**

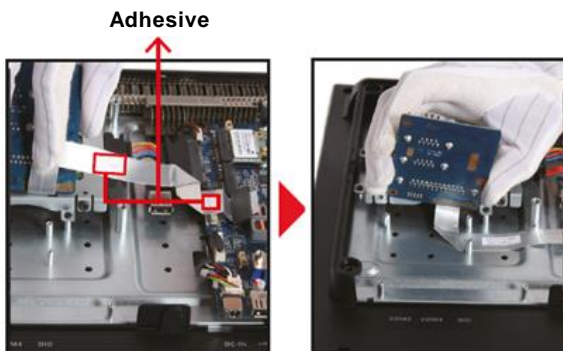
Due to safety reasons, please turn off your computer completely first and unplug it from the adapter.

1. Remove the cover on the back of the X50V4 first, unscrew four screws of the stand mount and remove the stand.
2. Unscrew four screws of the back cover and remove it.
3. Connect the ribbon cable to "CON1", then slide two latches into the lock position. Pull up two latches of "CON1" first, then plug the ribbon cable to "CON1".

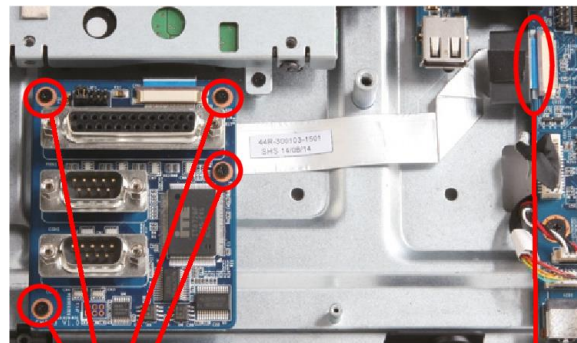


Jumper settings/ Jumper-Konfiguration/ Reglage des cavaliers (JP1) :

4. Tear off the adhesive membrane, fold and fix the adhesive ribbon cable to the chassis rail.



5. Tighten the PCL71 COM/LPT Port with four screws.
6. Connect the ribbon cable to "CON3", then slide two latches into the lock position.



4 Screws

Blue Side UP

7. Remove the back cover original rating label, then paste the rating label which sits in the accessory box.
8. Replace the back cover.
9. Refasten the stand and the back cover with eight screws.
10. Replace the cover, complete.

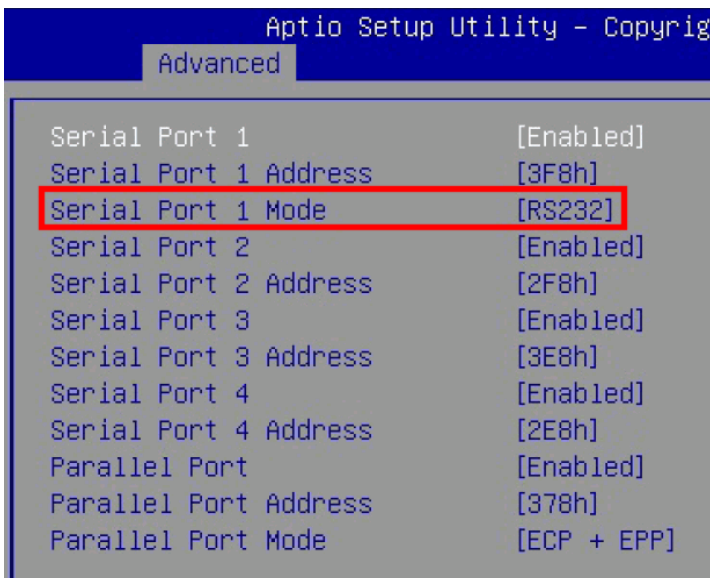


RS232 / RS422 / RS485 setting in the BIOS:



The Shuttle XPC Accessory PCL71 provides two serial ports in the back panel which support the RS232 mode.

The serial port "COM 1" can also be switched to RS422/485 mode in the BIOS.



Enter the BIOS setup and go to the "Advanced" tab. Change the option "Serial Port 1 Mode" to the desired setting for the "COM 1" port: RS232, RS422 or RS485.