

**Accessory for the X50V2-series:
COM/LPT ports**

The Shuttle accessory PCL68 is compatible with the Shuttle All-in-One-PC X50V2 (Plus) series. It will upgrade the PC by additional legacy ports and add two serial (COM) and one parallel (LPT) port to the back panel.

**Shuttle Accessory
PCL68**

Feature Highlight

Product name	<ul style="list-style-type: none"> Shuttle Accessory PCL68
External ports	<ul style="list-style-type: none"> 2x Serial port (Sub-D, 9 pins, male) 1x Parallel port (Sub-D, 25 pins, female)
External power	<ul style="list-style-type: none"> Both serial ports can provide a voltage supply of either 5V or 12V (max. 1.1A) for external devices
Scope of delivery	<ul style="list-style-type: none"> Printed Circuit Board (PCB) 3 screws Ribbon cable EMI core Type label sticker Multi-language quick installation guide (EN, DE, FR)
Compatibility	<ul style="list-style-type: none"> Compatible with the Shuttle All-in-One-PC X50V2 and X50V2 Plus.



Scope of delivery (PCL68)

Product PCL68

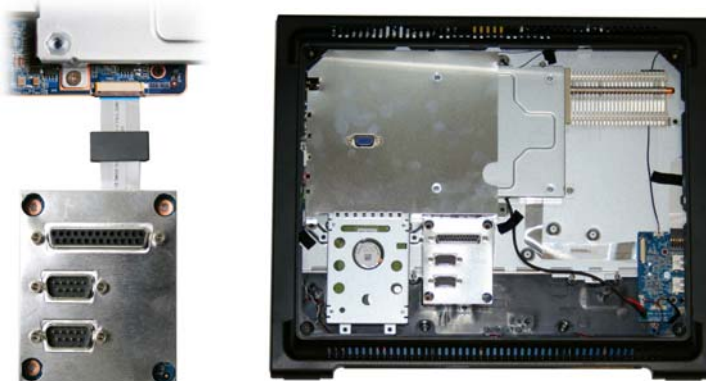
Order No: POA-PCL68



Images for illustration purposes only.

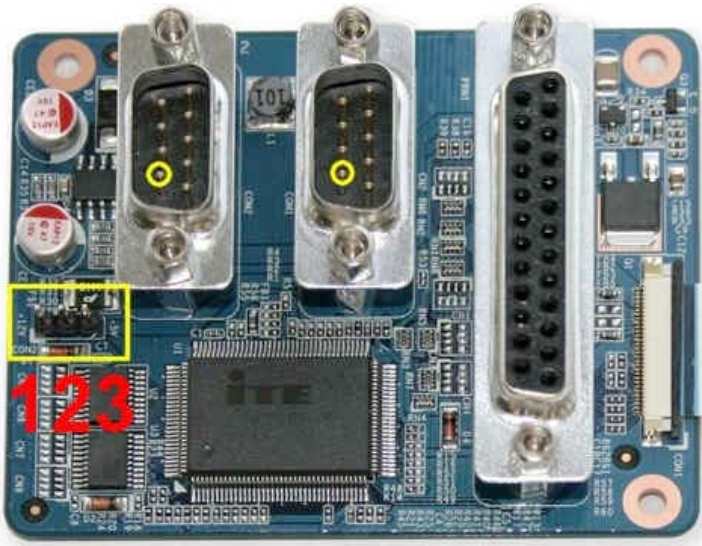


Shuttle All-in-One PC X50V2 (Plus)



Shuttle X50V2 with the PCL68 accessory





Power over serial port

Both serial ports can provide a voltage supply of either 5 or 12V (max. 1.1A) over Pin 9 (Ring pin) of the D-Sub connector depending of the jumper setting. This voltage can be used to supply external devices.

Jumper configuration

no jumper = 0V (default)

Pin 1-2 = 12V

Pin 2-3 = 5V