

25-in-1 Card Reader USB2.0

The Shuttle XPC Accessory PC23 is an internal USB 2.0 memory card reader/writer, which supports all popular and important digital formats, that are widely used on many popular applications, such as digital camera, video camcorder, PDA, IA devices, etc. Shuttle PC23 is easy to install (Plug & Play) in an open 3.5" bay of your Shuttle XPC and you will have the fastest, easiest way to transfer images, music, and data to your computer or to other memory cards. Plus, you'll extend your digital camera's battery life when you transfer your files from this card reader, and it is faster. With 2 changeable color panels in silver and black color the Shuttle PC23 is the perfect choice for your Shuttle XPC.

XPC Accessory PC23



Feature Highlight

Type	<ul style="list-style-type: none"> • Internal USB 2.0 Card Reader • Compatible with all Shuttle XPCs with 3.5" bay (including G, P and T series) • Reads and writes flash media cards • Front panel in silver and black color included • 5-pin USB 2.0 connector • 5V operating voltage provided by USB cable • LED indicator
4 Slots	<ol style="list-style-type: none"> 1. SD/MMC (Secure Digital and MultiMediaCard) 2. MS (Memory Stick) Pro/Duo 3. SM (SmartMedia) 4. CF Type I/II (CompactFlash)
25 Supported Formats	<ul style="list-style-type: none"> • Secure Digital™: SD, SDHC (High Capacity), <u>mini-SD™</u>, <u>Micro SD</u> • Multi Media Card™: MMC, MMC DualVoltage, <u>RS-MMC (Reduced Sized)</u>, <u>RS-MMC DualVoltage</u> • Transflash™ • Memory Stick™: MS, <u>MS-DUO</u>, MS-PRO, <u>MS-PRO DUO</u>, MS-Memory Select Function, MS ULTRA II, MS ROM, Magic Gate™ MS, Magic Gate MS Pro, Magic Gate MS-DUO, <u>Magic Gate MS-PRO DUO</u>, <u>Micro Memory Stick™ (M2)</u> • Compact Flash™: CFI, CFII • IBM Microdrive™ (MD) • Smart Media™ Card (SM) <p>Underlined formats: adaptor required Support the latest flash card specification: CF 3.0 (16-bit IDE mode), SD1.1 (HS-SD), MMC4.0 (8-bit), MSPro parallel mode (4-bit), xD 1.2 and SD 2.0</p>
Plug 'n' Play Support	<ul style="list-style-type: none"> • Windows 98SE/ME/2000/XP/Vista, Mac OS X • Recommendation: Please connect the Card-Reader after installing the operating system

Article number: **PC23**

Order number: **PCZ-PC230**



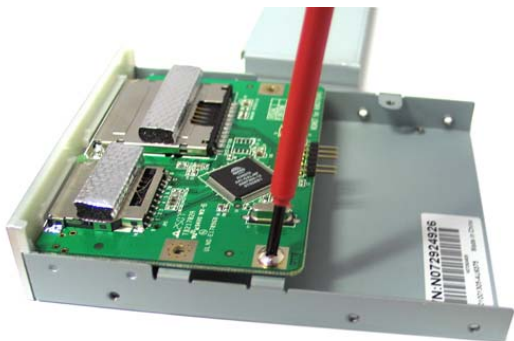
Instructions: Replacing the front plate of the card reader



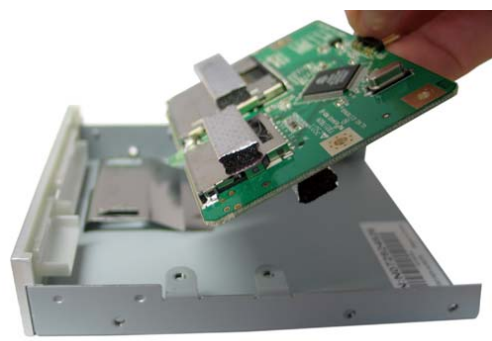
1 Place the drive on a desk



2 Remove its cover without tools



3 Unscrew the three screws



4 Remove the circuit board



5 Remove the front panel upwards



6 Put in the other front panel



7 Tighten the screws of the circuit board



8 Replace the cover