

DVD-based reset

1. Connect the DVD drive to the IDE-connection or USB connection.
2. Press the ESC key after the Shuttle logo has faded in.
3. In the boot-up menu select the associated drive depending on the choice of connection.



Select "USB-CDROM"
in the Boot Manager.

4. The system should boot from the DVD.
5. Now select the menu language.



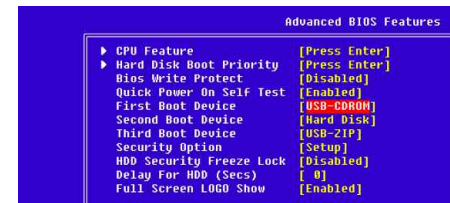
6. Confirm the reset by inputting "ok".
Please Note: All data will be lost!



7. Wait until the process is finished and the system has restarted.

If the above process fails, the please proceed as follows:

1. Press on the "Delete" key as soon as the Shuttle logo appears.
2. In the menu "Advanced BIOS Features" select the option "First Boot Device".
3. Set the selection to the drive where the Recovery-DVD is located.



Select "USB-CDROM"
in the Boot Manager.

4. Leave the BIOS and confirm this selection with the F10 key.
5. The system should boot from the DVD.

Shuttle[®]

EN System Reset Shuttle X 5000T
Complete System

